



POWERED BY
JOE VIEIRIA exp TM **UK**

📞 01295 535 188 / 07796 266 529

@ joe.vieira@exp.uk.com

🌐 joevieira.exp.uk.com

Hardwick Hill, Banbury, OX16 2DA

Offers Over £400,000

🛏 4 🚿 3 🚗 2

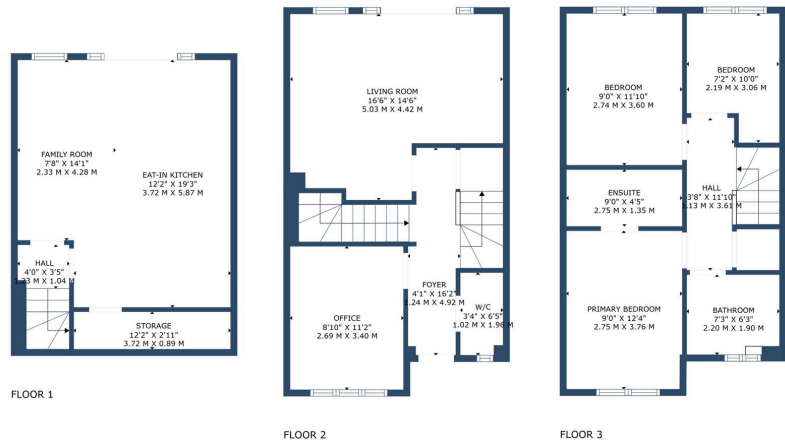


- Spacious four-bedroom, three-bathroom semi-detached home.
- Open kitchen/ dinner with garden access
- Living room with a balcony overlooking the garden
- Close to local schools and parks
- Council Tax Band Band D
- En-suite primary bedroom, fitted wardrobes.
- Modern & stylish decor
- Driveway for two cars
- Short walk to Outstanding Rated primary school
- Property REF: JV0032



Harwick Hill
Banbury OX16 2DA
Freehold:

All The Benefits Of A New Build, Without All The Hassles Of A New Build. This showhome standard family home is 7 years old but looks better than when it was new! The garden's even been beautifully landscaped, ready for the whole family to enjoy.



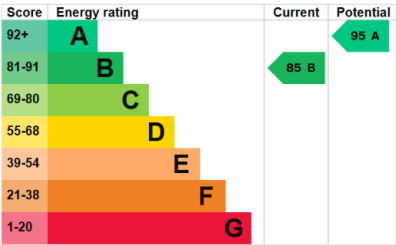
TOTAL: 1266 sq. ft, 117 m2
BELOW GROUND: 338 sq. ft, 31 m2, FLOOR 2: 464 sq. ft, 43 m2, FLOOR 3: 464 sq. ft, 43 m2
EXCLUDED AREAS: STORAGE: 39 sq. ft, 3 m2
Floor Plan Created By Harper & Reid. Measurements Deemed Highly Reliable But Not Guaranteed

You can read [guidance for landlords on the regulations and exemptions](#).

Energy rating and score

This property's energy rating is B. It has the potential to be A.

[See how to improve this property's energy efficiency](#).



The graph shows this property's current and potential energy rating.

Properties get a rating from A (best) to G (worst) and a score. The better the rating and score, the lower your energy bills are likely to be.

For properties in England and Wales:

- the average energy rating is D
- the average score is 50